

SECTION 5

EXPLODED VIEW

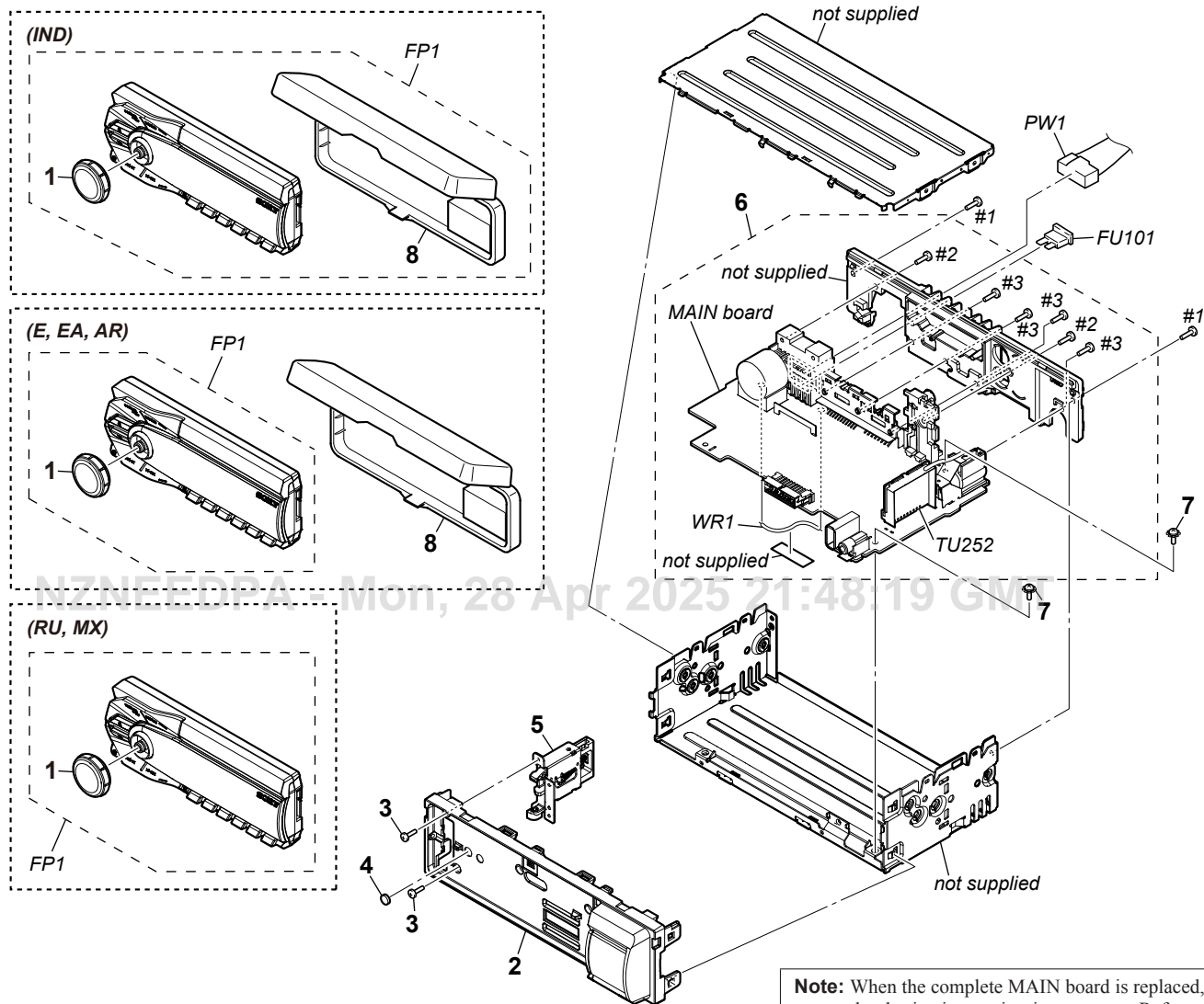
Note:

- -XX and -X mean standardized parts, so they may have some difference from the original one.
- Items marked “*” are not stocked since they are seldom required for routine service. Some delay should be anticipated when ordering these items.

- The mechanical parts with no reference number in the exploded views are not supplied.
- Color Indication of Appearance Parts Example:
KNOB, BALANCE (WHITE) . . . (RED)

- Abbreviation
 - AR : Argentina model
 - EA : Saudi Arabia model
 - IND : Indian model
 - MX : Mexican model
 - RU : Russian model

Parts Color Cabinet's Color

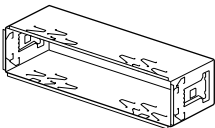


Note: When the complete MAIN board is replaced, the destination setting is necessary. Refer to “NOTE OF REPLACING THE COMPLETE MAIN BOARD OR SYSTEM CONTROLLER (IC101)” on page 4.

DSX-A35U/A35UE


Ver. 1.1

501



FITTING FRAME ASSY
× 1


502



KEY (FRAME)
× 2

(AR, RU)

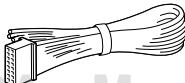
503



POWER CORD (ISO)
× 1

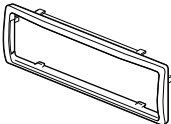
(E, EA, MX, IND)

503



POWER CORD
× 1


504



COLLAR
× 1

(E, EA, MX, AR, IND)

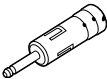
505



+K5 × 8
× 4

(AR)

506



ANTENNA ADAPTER
× 1